

Update on new Tool from Ann Craft Trust [Ann Craft Trust: Safeguarding Adults](#)

Information for Club Welfare Officers



[The Safeguarding Adults Roadmap - Resources - Ann Craft Trust](#)

About the Ann Craft Trust

Our strategy



Our Vision

We can stop the abuse of all adults through raising awareness, building understanding, and working together.



Our purpose

We exist to create a world where everyone understands their role in safeguarding adults and preventing abuse.



Our mission

To help others better understand safeguarding while supporting them to embed best practices across their organisations.



Our pillars



Collaborate

We believe that working in partnerships allow us to share our knowledge of safeguarding and learn from others, as well as help identify the gaps within sectors that need to begin developing safer cultures. The insights generated can in turn develop resources that will inspire and influence changes.



Advocate

We are passionate about supporting positive change for people in relation to safeguarding adults. We use research insights to form campaigns that will raise important issues and give people a voice. We listen, and through co-production, we start discussions that explore ways to make improvements in safeguarding adults practice.



Research

We seek out opportunities to support pioneering research projects. We stay aware of the latest safeguarding research which informs our training, resources, and practice.



Educate

We recognise that self-reflecting governance provides a good framework for establishing safer cultures. This must be learned before it can be practiced. We design and deliver our training and adult programmes to ensure those with safeguarding responsibilities can work to best practice guidelines.

The Road Map Tool



What is the Roadmap?



The Roadmap is designed to help sport and activity organisations to learn, develop and embed safeguarding policy and practice. It is a commitment to providing a safe and supportive environment. It will help those to:

- Understand what they need to do to comply with legal obligations
- Guide them through the steps to implement and embed good practice to safeguard adults
- Identify areas and signpost to where they may need extra support to meet those requirements
- Gain the confidence to know that their organisation is safeguarding the adults in its care

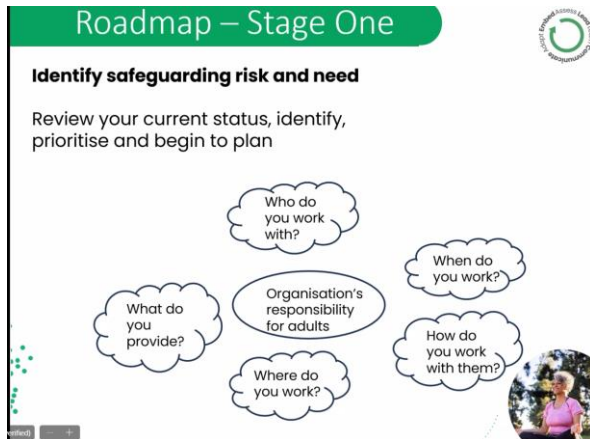
This resource is for sport and activity organisations of any size and structure operating within England who are not required to complete the mandatory Safeguarding in Sport Framework as a condition of Sport England Funding.

This could include large infrastructure, membership, and grassroots sport and activity organisations.

Roadmap –Stages one to six



Website: ACT



For further information:



How does this to what the BJA are doing already?

- BJA has met as an NGB the [The Safeguarding Adults in Sport Framework - Ann Craft Trust](#)
- BJA has a safeguarding adults policy (new version on BJA website shortly) [BJA- Safeguarding-Adults-14th-November.pdf \(britishjudo.org.uk\)](#)
- BJA has created a reporting of safeguarding pathway [Reporting a Safeguarding Concern - British Judo](#)
- Threshold Guidance [SAFE GAURDING-FLOWCHART-BOOKLET-3.pdf \(britishjudo.org.uk\)](#)

However, your may find the Ann Craft Trust tools helpful for extending your safeguarding provision in your clubs.

For further details or support safeguarding@britishjudo.org.uk