




If you contact the Inclusion, Safeguarding & Wellbeing Team at the BJA.

We want to reassure you that care about what you say, will listen to what you tell us and explain what we will do next. Contact us:

safeguarding@britishjudo.org.uk

Or report a concern via: [Reporting a Safeguarding Concern - British Judo](#)



How to report
Contact the British Judo Safeguarding Team
at safeguarding@britishjudo.org.uk

Report online by scanning the QR code

(From February 2024, you will additionally be able to report via MyVoice)

You can also contact the police on 999 or services found here:

[Support services | Sport England](#) (or home nation safeguarding sport services)

What we do & what happens next?

At the BJA we will follow good practice in responding to a concern about a child (or adult at risk)

[NSPCC The Child Protection in Sport Unit - Outline Case Management procedure flowcharts \(thecpsu.org.uk\)](#)

[Reporting & Recording Safeguarding Issues - Ann Craft Trust](#)

Member of staff, coach or volunteer made aware of concerns about child or adults' welfare or safety.



If child or adult requires immediate medical attention, then this needs action by club etc and ensuring that medic is informed that there may be a child/adult protection concern or allegation.



Member of staff, coach or volunteer reports to/consults with BJA Safeguarding Team (or home nation safeguarding team)



Safeguarding Team makes decision on immediate referral to or consultation with Children's Social Care or Police; records actions taken / agreed (including who will inform parents).



Safeguarding sends written safeguarding report to Children's/Adults Social Care / Police within 24 hours if it meets the threshold to report [Case management thresholds | CPSU \(thecpsu.org.uk\)](#), and considers need for support or advice for original referrer or others involved

Allegations against BJA staff, coaches and members:

See safelandings for detail: [SafeLandings - British Judo](#)

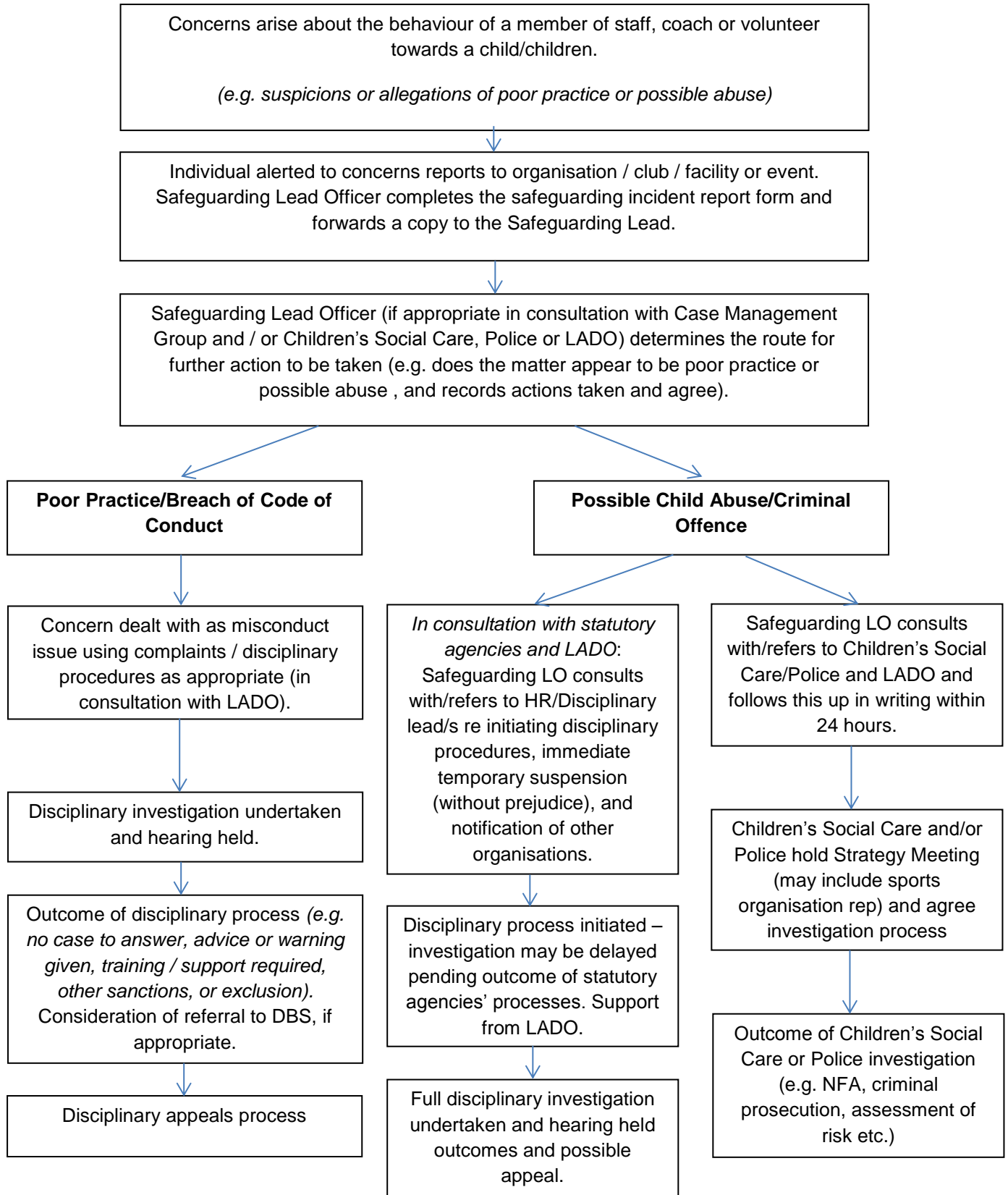
Concerns arise about the behaviour of a member of staff, coach or volunteer towards a child/children or adult. (e.g. suspicions or allegations of poor practice or possible abuse) Individual alerted to concerns reports to organisation / club / facility or event.

Safeguarding Team opens a case file (using MyConcern case management tool) and begins collecting facts.

Safeguarding Team (if appropriate in consultation with Case Management Group and / or Children's Social Care, Police or LADO/home nation equivalent) determines the route for further action to be taken (e.g. does the matter appear to be poor practice or possible abuse, and records actions taken and agree).

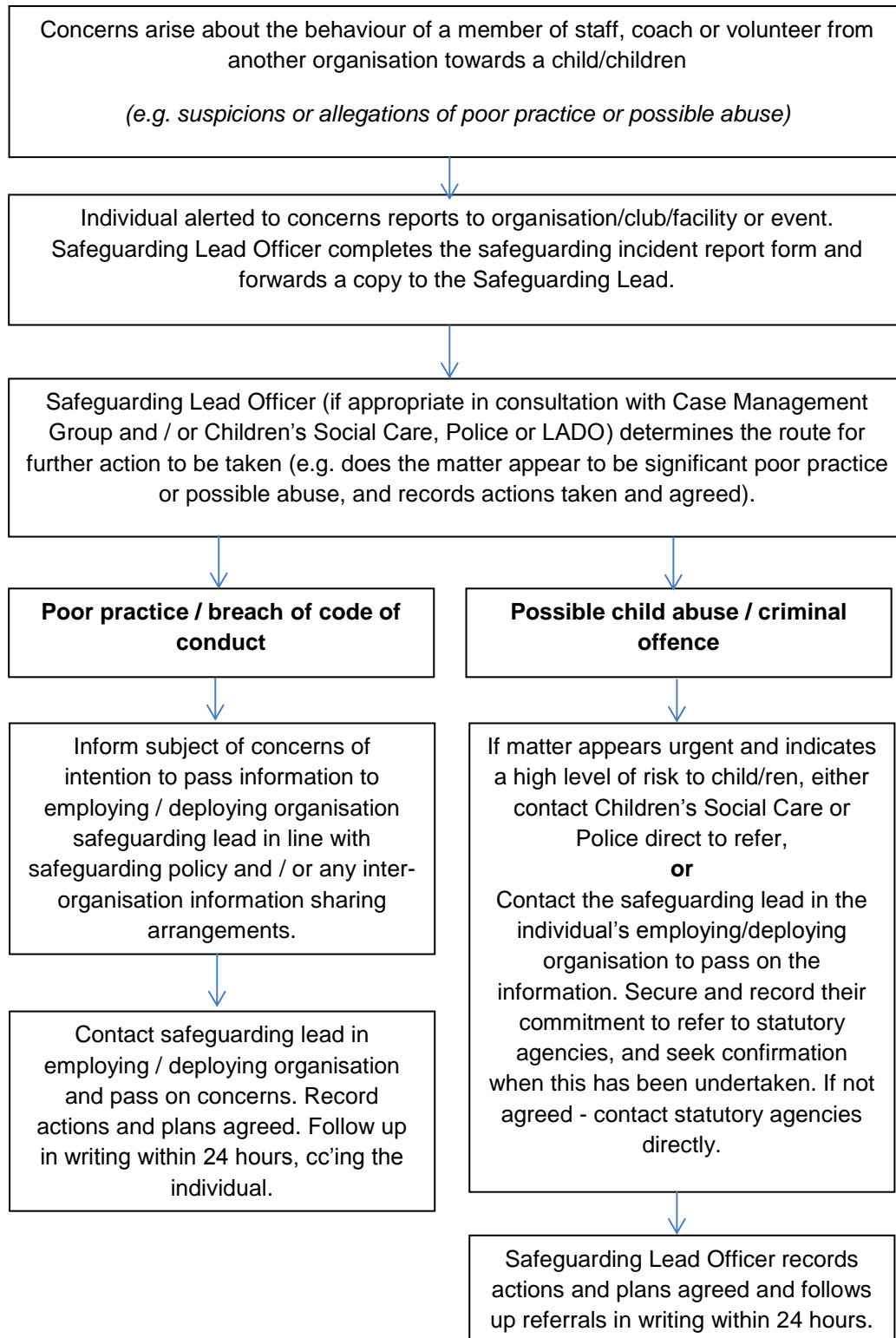
Outline safeguarding reporting procedure concerns

1. About the behaviour of the organisation's staff member or volunteer (e.g. allegation about a coach or officer's behaviour towards a child)



Outline safeguarding reporting procedure concerns

2. About the behaviour of another organisation's staff member or volunteer (e.g. allegations reported about an individual working for a partner organisation)



Outline safeguarding reporting procedure concerns

3. About children and young people arising outside of sport (e.g. at home, school or in the community)

